



Nom Wah

WINE AND SPARKLING



Lunar lychee hard seltzer 7

Craft hard seltzer; made with real, premium lychee nectar from Thailand (12oz can)



Lunar yuzu hard seltzer 7

Craft hard seltzer made with premium, freshly-squeezed yuzu juice from Japan (12oz can)



SŌTŌ premium Junmai sake 8

Clean and light sake with flavors of apple, soft rice, and a touch of umami (180mL can)



House red wine 7

Cabernet sauvignon (glass)



House white wine 7

Sauvignon blanc (glass)

BEER



Taiwan Beer Classic (Taiwan) 7

Brewed with a curated combo of malt, hops, and rice grown in Taiwan (11oz can)



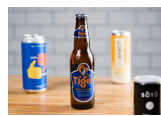
Kirin Light (Japan) 7

Crispy and refreshing light beer (12oz bottle)



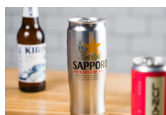
Threes Logical Conclusion IPA (Brooklyn) 7

Bursting with notes tropical fruit and a soft, creamy body, reminiscent of a smoothie



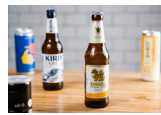
Tiger Beer (Singapore) 7

Slightly sweet with faint hoppyness; balanced with nice malty flavor (12oz bottle)



Sapporo Beer (Japan) 9

Refreshing lager with a crisp and clean finish (22oz can)



Singha Beer (Thailand) 7

Full-bodied lager with notes of lemons, flowers, and cinnamon (12oz bottle)



Nom Wah

NON-ALCOHOLIC BEVVIES



Ginger lemonade

5.5

Fresh squeezed lemon and ginger juice, slightly sweetened. Add a fun coconut froth on top for an additional \$1.50!



Chrysanthemum iced tea

5

House-made floral tea blend, slightly sweetened (16oz bottle)



Asian Palmer

5.5

Mix of ginger lemonade and iced black tea. Add a coconut froth for an additional \$1.50.



Apple Sidra

4

Taiwanese apple soda (12oz can)



Iced black tea

4

Served sweetened or unsweetened



Sanzo yuzu sparkling water

3

Lemony and slightly tart, this seltzer finishes with a fragrant ginger punch (12oz can)



Iced milk tea

4

Served sweetened or unsweetened



Soda

2

Choice of Coca Cola, Diet Coke, or seltzer

Hot tea

2

Hong Kong-style hot tea



Bottled water

2

Poland Springs